



## **PVC COMBINATION SHOWER**

PRODUCT CODE  
**S1320-PVC**

June 2017

### **PVC Combination Station, Plastic Bowl Eye/Face Wash and Shower Head**

Model S1320-PVC is a pedestal mounted combination station with an eye/face wash, with an ABS plastic bowl, ABS plastic eye/face wash spray heads, a stay-open 3/4" PVC ball valve with a push handle and a shower with a plastic showerhead and a 1" stay-open PVC ball valve with a pull rod. All pipe and pipe fittings are dark grey schedule 80 PVC.

#### **Standard Equipment:**

**Showerhead:** Yellow, ABS plastic 190mm diameter showerhead with 75LPM flow regulator. An anti-microbial agent is molded into the ABS material, providing integral protection.

**Shower Valve:** 1" schedule 80 PVC stay-open valve with Teflon seals. Unit is provided with electro-polished stainless steel actuator arm and a 737mm stainless steel pull rod electro polished for added corrosion resistance.

**Eye/Face Wash Bowl:** Yellow, ABS plastic 300mm diameter bowl.

**Spray Head Assembly:** ABS yellow plastic eye/face wash heads with integral flip dust covers, internal flow controls and filters to remove debris from the water. An anti-microbial agent is molded into the ABS material, providing integral protection. Heads are attached to an all PVC supply tubing assembly.

**Eye/Face Wash Valve:** 3/4" schedule 80 PVC stay-open valve with Teflon seals. Unit is provided with a stainless steel push handle electro polished for added corrosion resistance.

**Water Supply:** 2" schedule 80 PVC socket, top inlet.

**Waste:** 1-1/2" schedule 80 PVC socket.

**Piping & Mounting:** 2" schedule 80 PVC, upper piping. 2-1/2" schedule 80 PVC, lower pedestal pipe for added strength. 7" diameter heavy duty schedule 80 PVC mounting flange.

**Universal Sign:** ANSI compliant, Safety Eye/Wash identification sign.

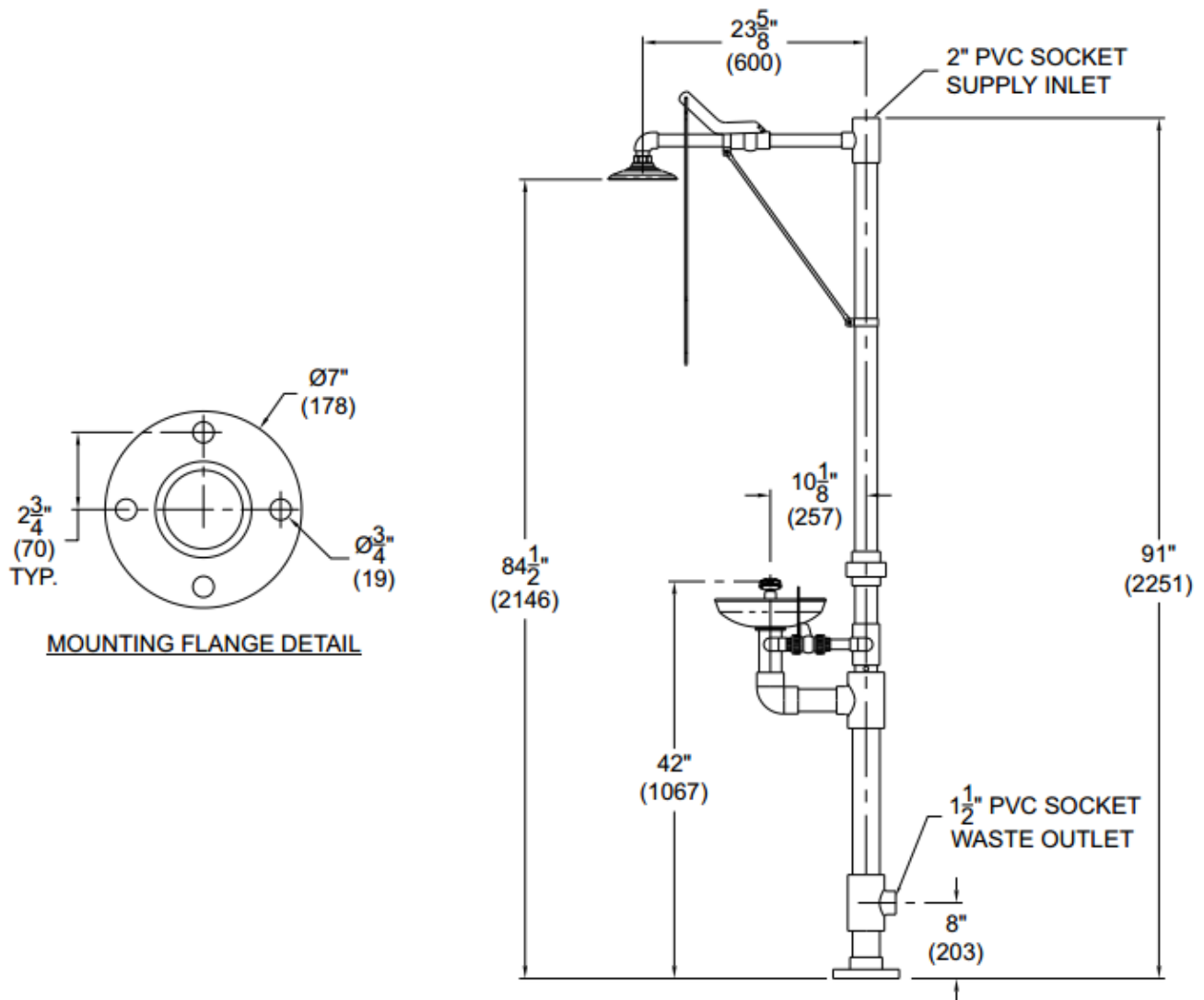
**Weekly Test Tag:** A waterproof test card to record the date and inspector's name for weekly functional testing of the unit.

#### **Compliances:**

Test rating conditions are compliant to ANSI Z358.1-2014



□ **Model S1320-PVC** : Combination Station, Plastic Bowl, Eye/Face Wash and Showerhead



**GENERAL NOTES;**

1. ALL DIMENSIONS ARE IN INCHES (MM).